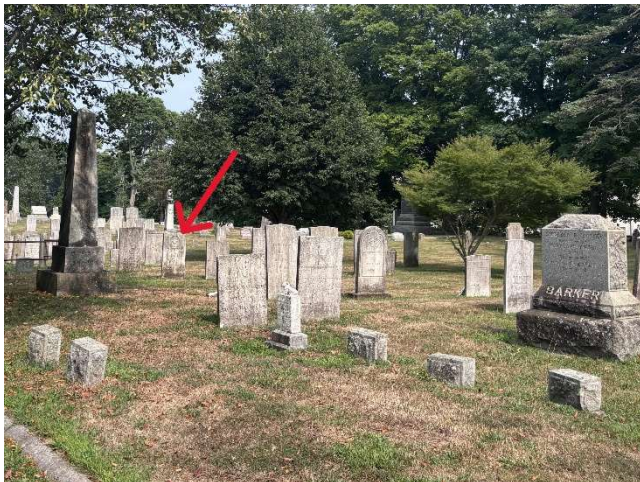


Branford Center Cemetery

Branford Center Cemetery Grave Locations

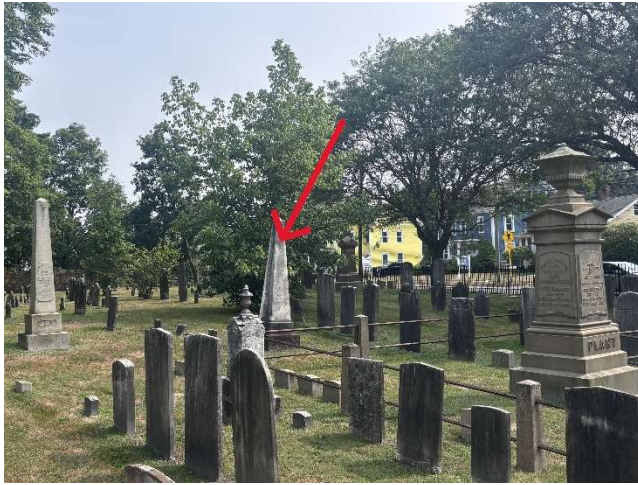


1. **Merit Foot (Worshipful Master)** On right 7 rows past the corner/end of the chain link fence to left of driveway

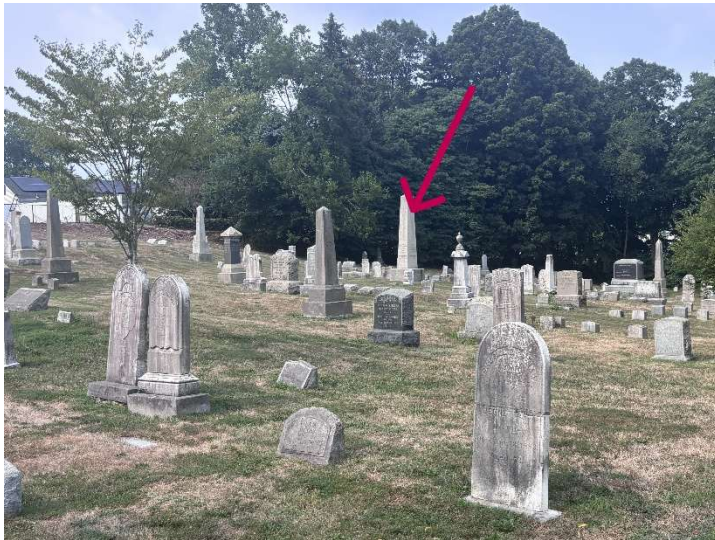


Branford Center Cemetery

2. Calvin Frisbie (Sr. Warden) On right side, 5 rows in from front



3. Orin Datus Squire (Jr. Warden) On left, after driveway starts down hill

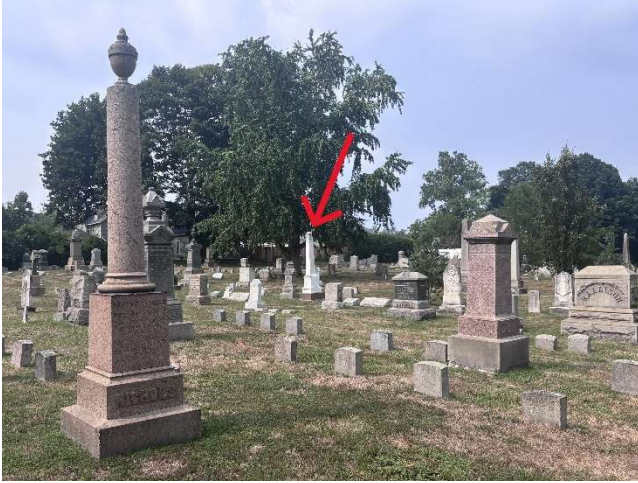


4. Samuel Penfold Russell (Jr. Deacon) On right, 4 rows in from front, inside Russell family plot



Branford Center Cemetery

5. Loring D Hosley (Tyler) On left, in front of the large tree

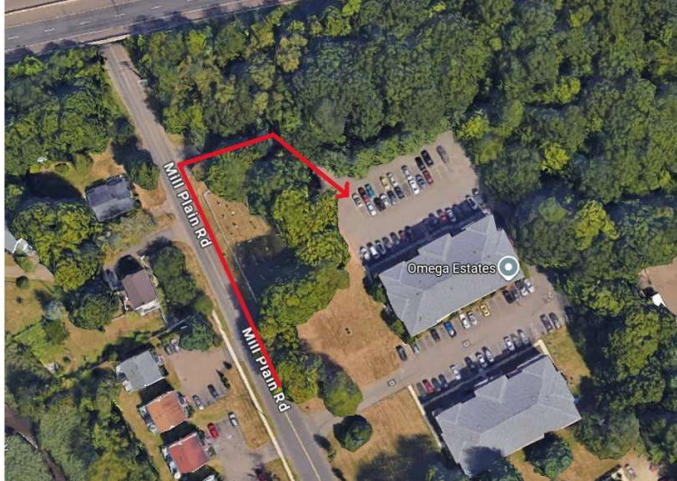


6. Willoughby Lynde Lay (1st EA Initiate) On right, 4 rows in from front

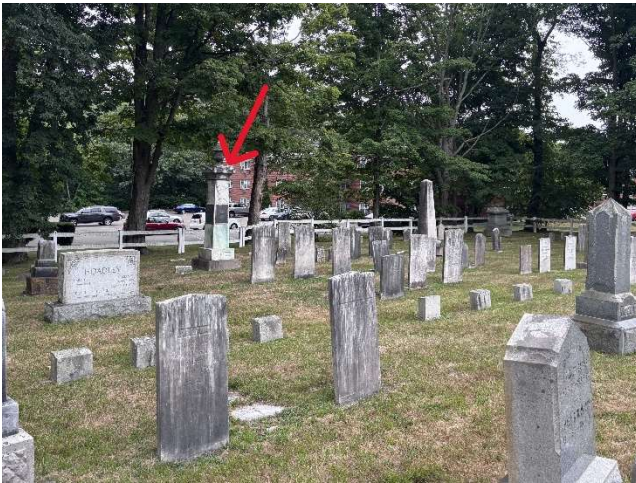


Mill Plain Cemetery

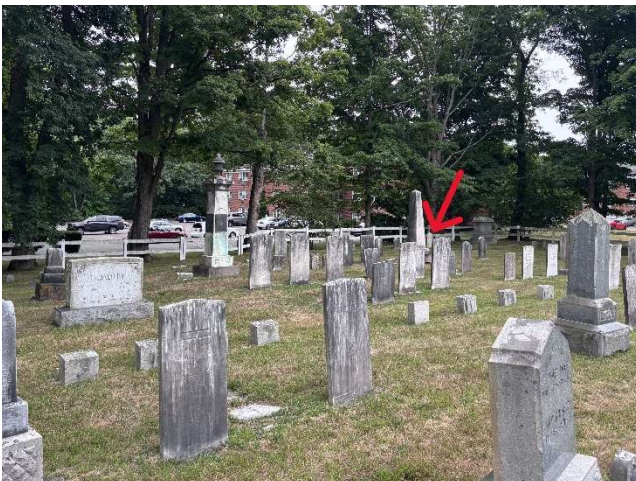
From East Main St, turn left onto Mill Plain Rd. Look for the small cemetery on right before the I-95 overpass. Turn right into driveway just after the cemetery and park. Use the entrance gate in front (northwest corner).



7. Asa Norton (Treasurer)



8. James Wrentville Frisbie (Sr. Deacon)



Mendon Cemetery (Illinois)

9. Lyman Frisbie (Secretary) Precise grave location in cemetery unknown



Merit Foot (June 19, 1795 - March 4, 1876), on his final visit to the Widow's Son Lodge, charged the brethren to:

“Stand by the old landmarks.

Deal justly with man and walk humbly before God.

Thus in due time you will each receive your reward.”